

Introduction

This guide will take you through the steps necessary to install the Amusement Connect MobileMech on the Arachnid G3 dart machine using the manufactured wiring harness.

Parts Required:

- MobileMech
- Arachnid G3 Wiring Harness
- 2 x Posi Taps
- Electrical Tape or Heat shrink
- Zip Ties
- Wire Cutters

Game Applications:

* Arachnid G3 Fire, Ice, Plus



Pre-Installation Requirements

Before beginning the installation, ensure that the following requirements are met:

AC Location Activation

The game machine asset and MobileMech device must be assigned to an available location name under your organization in the Amusement Connect Operator Dashboard. Complete the [Location Setup Request Form](#) if a new location needs to be created.

Game Machine Asset Setup

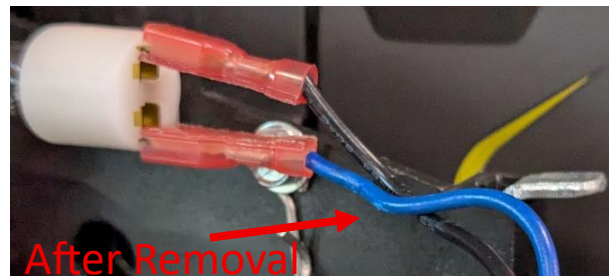
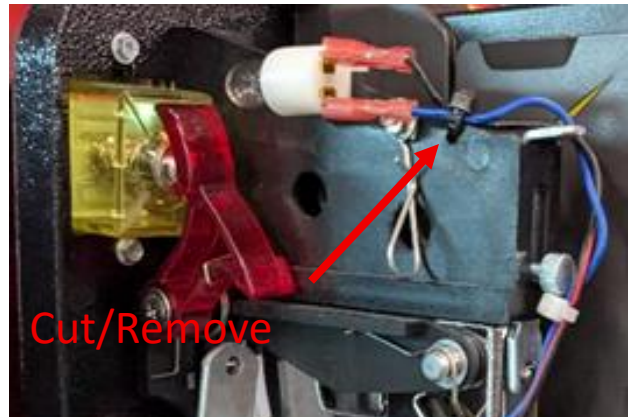
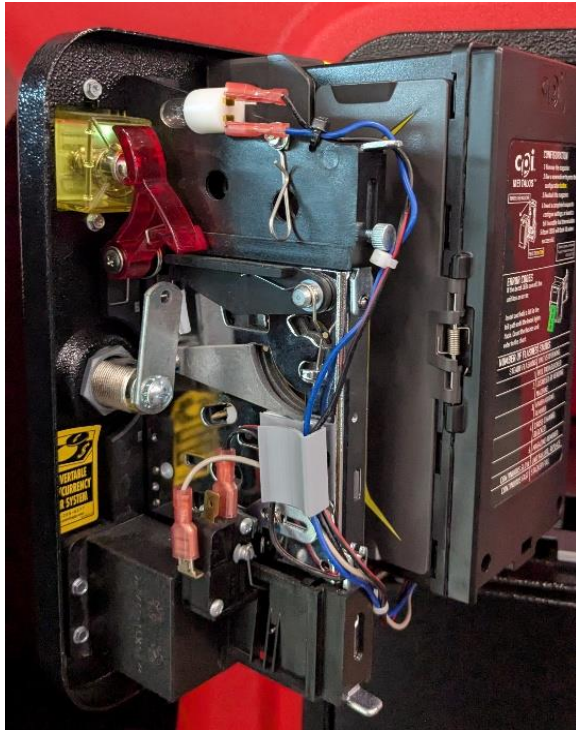
To properly function after installation, the powered MobileMech device must be assigned to an active Game Machine Asset within the Operator Dashboard. To create a new Game Machine Asset, follow the Quick Start Guide process.

Connectivity

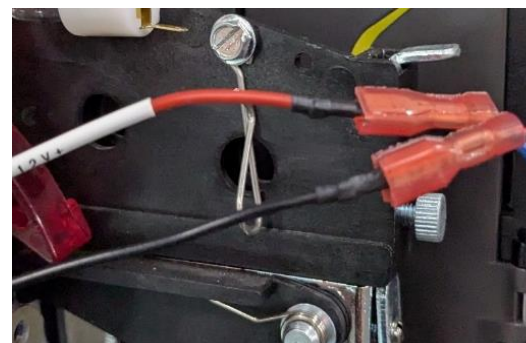
Wi-Fi configuration requires access to the router SSID and password. A 2.4 GHZ network is required to connect the MobileMech device to Wi-Fi.

Wiring Installation

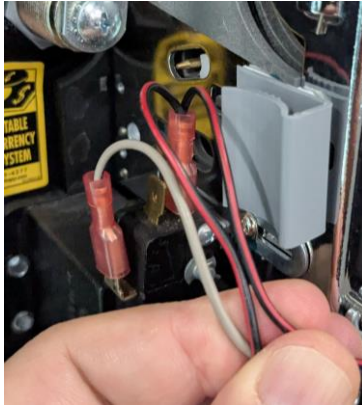
1) Open the coin door on the machine, then clip and remove the zip tie connecting the two-coin light wires to the the game machine.



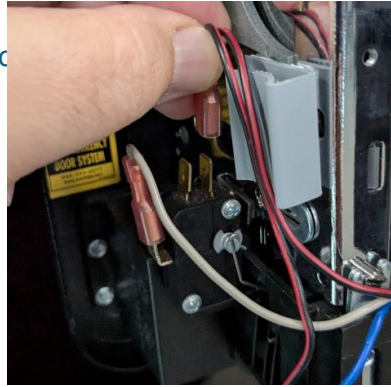
2) Remove the **Red/Black** wire from the coin light. Plug into the Black/Ground of the MobileMech harness.



3) Remove the **Blue** wire from the coin light. Plug into the **Red 12V+** of the MobileMech harness.



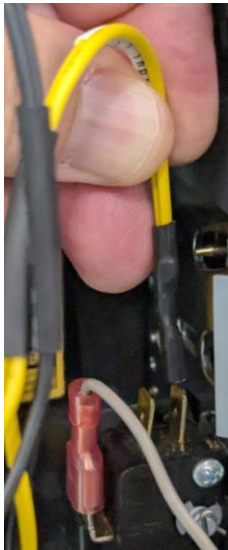
4) Identify the two coin lines on the coin mechanism.



5) Working from the inside out, remove the first coin line.



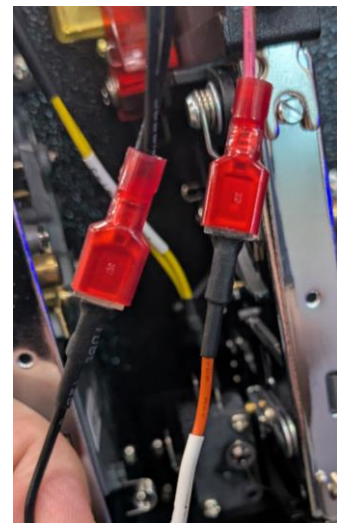
6) Connect the **Orange** Coin Pulse Output line from the AmusementConnect harness to the coin line disconnected in the previous slide.



7) Connect the **Yellow** Coin In from the AmusementConnect harness to the coin mechanism.



8) Remove the second coin line from the coin mechanism.



9) Connect the **Black** ground from the AmusementConnect harness to the second coin line disconnected in the previous slide.

*See Bill Validator Section to complete installation